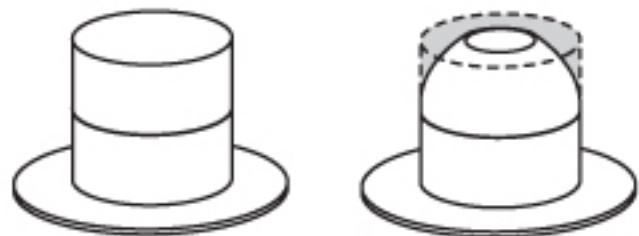


# Barbie™ Perennial

## Petite Signature Cake Assembly and Step by Step Decorating Instructions

To build the Barbie™ Perennial Petite Signature Cake you will need:

- 2 - 4" Round Cake Layers\*, Small Bundt Cake or Oversized Cupcake
- 1 - 6" Round cake board



\* Recommend using #11161 – Round cutter to cut 4" layers from sheet cake.



1. Place icing between the cake layers. Trim top layer to taper and form a bell shaped bottom.



2. Ice cake with mixed Ribbon Pink #9158 with a hint of Violet #9510. Use a section of poly collar to smooth the icing.



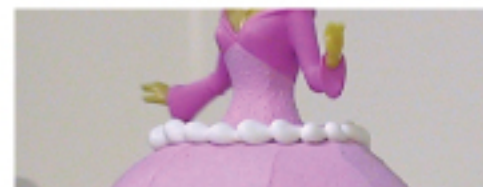
3. Place DecoSet® item on cake.



4. Using tip #104, pipe mixed Ribbon Pink #9158 with a hint of Violet #9510 band around base of cake. Also pipe ruffle above band on base of cake.



5. Using tip #4, pipe White ball border around top of cake as shown.



6. Using tip #4, pipe Violet #9510 ribbon around Barbie®.



7. Using tip #2, pipe White and Ribbon Pink #9158 with a hint of Violet #9510 swirls as shown.



8. Using tip #2, pipe Violet #9510 and mixed Deep Pink #9141 and Ribbon Pink #9158 with a hint of Violet #9510 dots.



9. Using tip #2, pipe light mixed Ribbon Pink #9158 with a hint of Violet #9510 mini tulips as shown.



10. Place warning sticker on outside of cake box.



Barbie™ Perennial DecoSet®  
#30099 - 6/Pkg.